

**Canon**



**imageRUNNER**  
ADVANCE

**8105**  
**8095**  
**8085**

multifunction printer  
high speed, high volume  
black-and-white copy/print  
color scan

**LIGHT PRODUCTION SOLUTIONS**



advancing business



# imageRUNNER ADVANCE



**8105**  
**8095**  
**8085**



Copy/Print/Send/Store



Up to 13" x 19-1/4"



Up to 1200 x 1200 dpi



Black-and-White Copy/Print



Color Scan and Send

### Exceptional power

- > Advanced imageCHIP system architecture
- > 80GB HDD standard; up to 250GB HDD
- > 1.5GB RAM standard; 2GB RAM maximum

### Impressive speed

- > Up to 105 ppm (8105), 95 ppm (8095), and 85 ppm (8085) (Letter)
- > Up to 200/100 ipm single-pass duplex scanning at 300 dpi (BW/Color)

### Flexible in-line finishing options

- > Multiposition stapling, 2- and 3-hole punching, booklet-making, booklet trimming (face), professional punching
- > Production Booklet Finisher option for advanced productivity
- > Z-fold, C-fold, Accordion Z-fold, Half-fold, Double Parallel Fold
- > Post-process document insertion

### High-volume paper handling

- > Up to 7,700-sheet maximum paper capacity
- > 14 lb. Bond to 80 lb. Cover [drawers, paper deck (Letter)]
- 14 lb. Bond to 140 lb. Index [bypass, paper deck (up to 13" x 19")]
- > Up to 13" x 19-1/4" paper size

### Workflow solutions

- > imageRUNNER ADVANCE Essentials
- > Advanced Box document sharing solution
- > Standard UFR II Print
- > Standard Universal Send
- > Adobe® PostScript® 3™ and Adobe PDF formats
- > Scan/print via USB
- > imagePASS/MicroPress\*
- > uniFLOW v5.0

### Strong environmental focus

- > ENERGY STAR® qualified
- > 120V/20A for low energy consumption
- > Reduction of CO<sub>2</sub> emissions in manufacturing process
- > Exceeds EU RoHS Directive standards

\* Check for availability.

# Robust productivity. Easy operation. Amazing versatility. A really smart growth strategy.

## Positioned for success

Designed for today's competitive business environment, the imageRUNNER ADVANCE 8105/8095/8085 systems can increase your revenue and improve your profitability. With blazing speed and outstanding performance, these digital monochrome models will unleash the powerful productivity you require. And keeping the future in mind, Canon offers an impressive range of modular features to meet your growing needs.

## A revolutionary approach

These multifunction systems will transform the way you work. With a dramatically new platform, the Canon imageRUNNER ADVANCE 8105/8095/8085 models deliver the robust functionality and ease of use that are vital to high-volume offices, in-plant and central reprographic facilities, and print-for-pay operations.

## World-class efficiency

Now you can comfortably meet tight deadlines and demanding quantities without pressure. Exceptional processing speeds keep your work moving at a rapid pace. Automated features minimize downtime and maximize productivity. And with Canon's recognized reliability, you can count on virtually nonstop operation.

## Striking results

Meet today's demanding business needs with exceptional quality time after time. Thanks to Canon's new technologies, you'll produce reports, booklets, newsletters, and contracts, all with clear text, sharp images, and smooth halftones on a range of media. And with an extensive array of in-line finishing options, you'll deliver professional results that are sure to impress.

## Workflow simplified

From start to finish, the imageRUNNER ADVANCE 8105/8095/8085 systems streamline every part of your production process. Powerful tools and centralized control let operators smoothly monitor jobs from prepress to finishing. And complicated or repeated tasks can be performed with the touch of a single button.

## Less is considerably more

Now with a reduced footprint and the convenience of 120V power requirement, these high-volume, high-productivity black-and-white models are ideal for large businesses, sizable workgroups within an enterprise, or print service providers with space constraints. The Canon imageRUNNER ADVANCE 8105/8095/8085 systems deliver the next-generation technologies, integrated solutions, and advanced capabilities that will make your growth strategy a profitable reality.



## ADVANCED PRODUCTIVITY

Stunning speed. Remarkable ease. True reliability.  
The keys to success.

### Powered for performance

Thanks to Canon's Advanced imageCHIP System architecture, you can achieve the exceptional processing speed your work demands. Two processors work together to deliver outstanding connectivity and quality.

Black-and-white documents are output at amazing speeds of up to 105 ppm (8105), 95 ppm (8095), and 85 ppm (8085) (Letter). And the single-pass duplex color scanner converts paper documents into black-and-white or color digital files at up to 200/100 ipm at 300 dpi.

### Simple, intuitive operation

The interface is designed for maximum ease of use. Functions are quickly initiated with clearly identifiable on-screen buttons that can be organized to fit the way you work. And users will appreciate the ability to adjust and tilt the upright panel to a comfortable position.

By streamlining steps, the imageRUNNER ADVANCE 8105/8095/8085 models help you compose and manage print jobs and generate output more rapidly. Repetitive or complicated tasks can be assigned to a single button on the interface, speeding workflow and improving accuracy. The minutes saved at every step add up to big increases in effectiveness and cost savings.

### Keeps running

Slowdowns and interruptions cost time and money. That's why Canon designed the imageRUNNER ADVANCE 8105/8095/8085 systems with durable parts and a range of automated features that minimize downtime and maximize productivity.

The Amorphous Silicon Drum is engineered for high-volume demands and increased longevity with an exceptionally high yield of up to six million impressions. And with remote notification of low supply inventory, you're always prepared. Even better, toner and paper can be replenished on-the-fly—no need to interrupt a job.

A paper capacity of up to 7,700 sheets ensures that long jobs can run without having to stop for paper replenishment. If the correct paper size or stock is temporarily unavailable, the system can hold that job in the queue and begin the next job without delay. And, when you're printing on three tabs from a bank of five, the other two can automatically be kicked out to a separate tray.

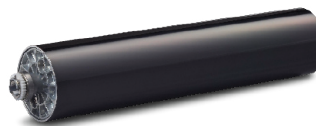


#### Main Menu

Customize the number, size, and layout of the function buttons, and select a background.

#### Quick Menu

Combine and access commonly performed tasks with just one button.



High-yield Amorphous Silicon Drum



7,700-sheet maximum paper capacity

### Reliably ahead

Canon builds in signature reliability. And thanks to remote service monitoring, automated dispatching, and a synchronized hard-drive backup, users can count on virtually nonstop operation. With access to the latest technology and simple, clear upgrades, you can power through your jobs, giving you more time to devote to other business areas.

## ADVANCED IMAGE QUALITY

Amazing detail. Rich tones. Consistent quality.  
A striking impression in black and white.

### Intelligent innovation

Canon's noted expertise in digital imaging and its ongoing commitment to R&D have resulted in a range of advanced technologies that deliver outstanding image quality time after time. Here are a few features that make the Canon imageRUNNER ADVANCE 8105/8095/8085 systems stand out.

### Exceptional image quality

Canon's next-generation imaging systems deliver stunning black-and-white image quality with astonishing speed. True 1200 x 1200 dpi print resolution produces fine lines and crisp text, even at small font sizes.

With 256 tonal gradations, halftones are rendered in rich shades, from the lightest gray to the deepest black. To ensure optimum quality throughout the run, Auto Gradation Adjustment sets densities at their ideal levels, while Canon's unique twin-sleeve technology evenly distributes toner across the page. Even more remarkable, these technologies achieve spectacular results without sacrificing productivity.



### pO Toner

Canon's new pO (precise Output) toner faithfully reproduces detailed images and text. Across the page, solids print with an impressive evenness. Halftones and patterns retain their details, displaying smooth gradations. With our twin-sleeve technology, toner is evenly distributed across the page and throughout the print run. And in line with Canon's environmental focus, this toner helps reduce energy consumption through its ability to fuse at low temperatures.



pO toner bottle

### Precise registration

Accurate registration is achieved with impressive precision in the imageRUNNER ADVANCE 8105/8095/8085 systems. A new cassette design ensures that every page enters the printer at the same location, and manual adjustment features offer each user greatly expanded control over alignment. For duplex documents, front-to-back registration can be precisely matched within one millimeter to help prevent images from being misaligned and to ensure a professional result.

Quality, productivity, versatility.  
Everything you need to advance your business.

Stay ahead of the competition with the power and functionality of these imageRUNNER ADVANCE systems.

**Booklet Finisher-F1 PRO**

- 2-tray, 5,000-sheet capacity
- 100-sheet, multiposition stapling
- Up to 140lb. Index, plain, heavy, coated,\* and tabs
- 25-sheet saddle-stitching up to 13" x 19-1/4" and custom sizes
- V-fold up to 5 sheets without staple



**Internal Puncher Unit**

- 2- and 3-hole punch

**External Booklet Trimmer**

- Face trim up to 100 pages (25 sheets)



**Document Insertion Unit**

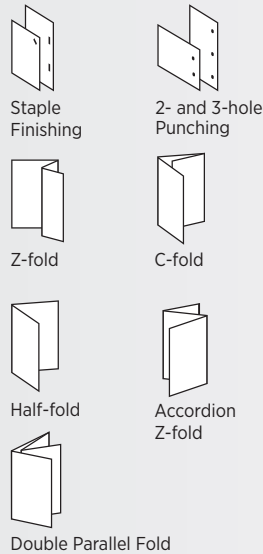
- Insert preprinted sheets
- Up to 140 lb. Index, plain, heavy, coated, and tabs
- Up to 13" x 19-1/4"
- Two trays
- 400-sheet total capacity



**Paper Folding Unit**

- Z-fold, C-fold, Half-fold, and Accordion Z-fold, Double Parallel Fold

**Finishing Options**



**Stapler Finisher**

- 3-tray, 4,250-sheet capacity
- 100-sheet, multi-position stapling
- Up to 140 lb. Index, plain, heavy, coated,\* and tabs



**Booklet Finisher**

- 3-tray, 4,250-sheet capacity
- 100-sheet, multiposition stapling
- Up to 140 lb. Index, plain, heavy, coated,\* and tabs
- 20-sheet saddle-stitching up to 13" x 19-1/4"
- V-fold up to 5 sheets without staple

**Internal Booklet Trimmer**

- Face trim up to 80 pages (20 sheets)

**Internal Puncher Unit**

- 2- and 3-hole punch

**Professional Puncher**

- Includes Integration Unit
- Up to 80 lb. Cover
- Letter-sized only, tabs
- Supports various die sets
- 25,000-sheet capacity
- Finish punched output



**Single-Pass Duplex Document Feeder**

- 300-sheet capacity
- Duplex scan speed up to 200/100 ipm (BW/Color) at 300 dpi



- 10.4" TFT high-resolution touch-screen
- Tilt-and-swivel capability
- Customizable UI screen



**Memory Media**

- Scan to or print from USB thumb drive or memory media
- Optional multimedia reader/writer supports SD, SDHC, CompactFlash, Memory Stick, Microdrive



**Keyboard**

- External keyboard (optional)
- Connects via USB interface

**POD Deck Lite**

- 3,500-sheet capacity (20 lb. Bond)
- 13" x 19" maximum paper size
- 14 lb. Bond to 110 lb. Cover, plain and heavy

**Paper Deck Unit**

- 3,500-sheet capacity (20 lb. Bond)
- 8.5" x 11" maximum paper size
- 14 lb. Bond to 80 lb. Cover, plain and heavy

**Standard Paper Capacity**

- 4,200-sheet total standard paper capacity:
- 2 x 1,500-sheet paper drawers (Letter)
  - 2 x 550-sheet paper cassettes (up to 13" x 19-1/4")
  - 1 x 100-sheet multipurpose tray (up to 13" x 19-1/4")

**Print Versatility**

- UFR II (standard)
- PCL 5e/6 (optional)
- Adobe PostScript 3 (optional)
- imagePASS, MicroPress\*\* (optional)

\*\* Check for availability.

## ADVANCED VERSATILITY

# More options. More connectivity. More ways to gain revenue and profitability.

### Lots of choices

With advanced paper handling and multiple finishing capabilities, the imageRUNNER ADVANCE 8105/8095/8085 systems handle a wide range of jobs efficiently and cost-effectively. Easily satisfy the needs of your high-volume operation with professionally produced reports, booklets, newsletters, manuals, and contracts.

**The right paper for the job.** Enjoy high-quality output on a range of stocks in weights from 14 lb. Bond to 140 lb. Index. Handle sheet sizes from 4" x 5-7/8" to 13" x 19-1/4"

**A professional finish.** Choose from an expanded range of in-line finishing options, including multiposition stapling of up to 100 sheets, automatic 2- and 3-hole punching, professional punching with varied punch patterns, and saddle-stitching and face-trimming of up to 25-sheet/100-page booklets. You can even add color to your document set with the ability to insert preprinted media.



Create professionally produced reports, manuals, and newsletters. Insert a color cover and select saddle-stitch binding.

### Expanded connectivity

**Scan in color.** A single-pass duplex color scanner converts paper documents into high-quality color or black-and-white digital files. Impressively cost-effective, these systems offer the versatility of color scanning combined with high-volume, black-and-white printing.

**More file formats.** Enjoy greater flexibility and accuracy. Using Universal Send, easily convert paper documents to digital form in an expanded range of file formats. These systems support advanced PDF features including Adobe PDF Reader Extensions, Encrypted PDF, Searchable PDF, and more. For outstanding speed across your network, color file sizes can be reduced with High Compression PDF/XPS.

**Streamlined job management.** Designed to manage workflow with maximum efficiency, the imageRUNNER ADVANCE 8105/8095/8085 systems boost productivity. With a complete set of advanced job management features, tools, and utilities, jobs will move through your office or facility with impressive speed and accuracy.

**Customized solutions.** Each business has special needs. Canon MEAP® (Multifunctional Embedded Application Platform) enables the systems to incorporate unique applications, such as cost-recovery and document distribution solutions. By embedding these technologies, users can streamline workflow, eliminate excess hardware, and increase productivity.

**Support for the latest technologies.** With an eye on the future, Canon is committed to integrating new industry standards to help you streamline your operation. From the preparation of print jobs for in-line binding to the centralized management of your document workflow, the Canon imageRUNNER ADVANCE 8105/8095/8085 systems are designed to take advantage of cutting-edge technology workflow solutions that enhance efficiency and simplify your production processes.



## ADVANCED WORKFLOW

Manage costs. Monitor production. Streamline workflow.  
A great bottom-line story.

### The best options

It takes the right combination of management tools and prepress applications to meet the needs of your high-volume operation. The imageRUNNER ADVANCE 8105/8095/8085 systems are versatile and can be configured to meet your unique workflow needs and business goals.

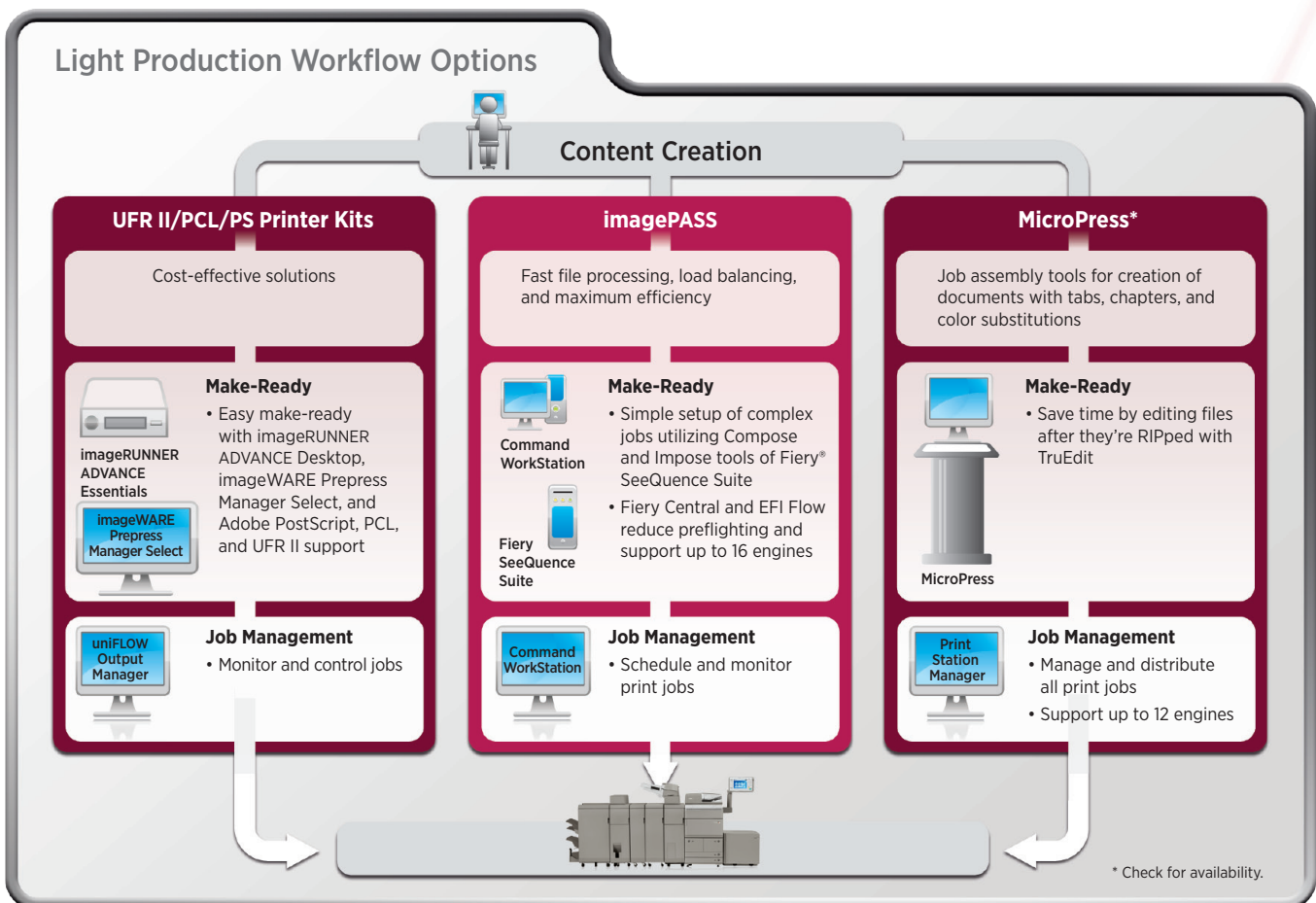
### Control from start to finish

These systems make it simple to reduce print costs. uniFLOW v5.0 software focuses on document print workflow, from accounting and secure printing to job ticketing and print room management. Effective controls let you monitor and assign costs to users and analyze central print queues for optimal job placement. And uniFLOW detects “out of toner” and paper jam issues and lets you smoothly redirect jobs to other printers.

### Document publishing made easy

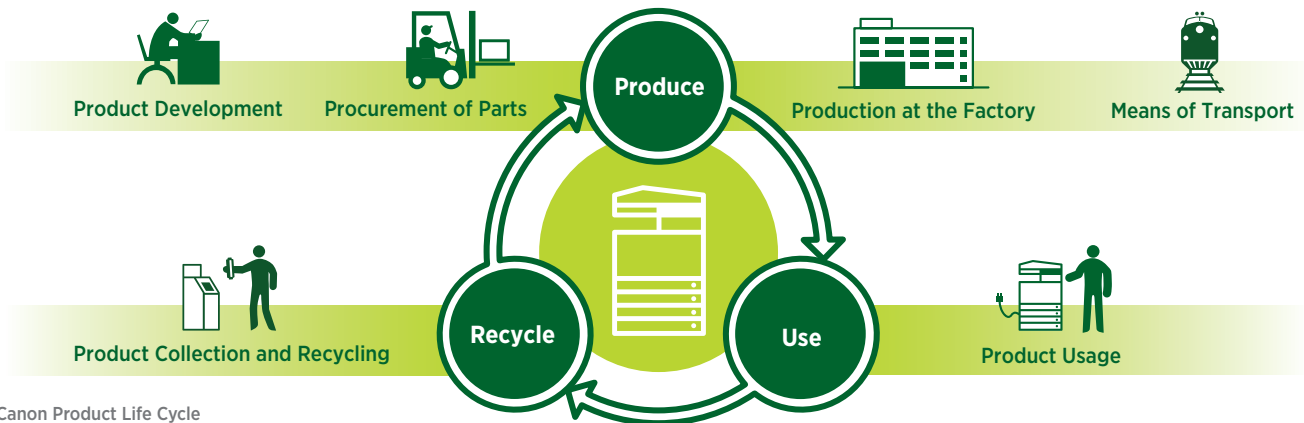
Designed for high-volume environments, Canon's imageWARE Prepress Manager Select utility offers extensive document creation and powerful production capabilities. With “drag-and-drop” simplicity, you can merge, edit, or reassemble content from several sources into a single, cohesive document. And operators will appreciate the ability to view documents before they're printed.

A variety of tools easily help you prepare complex jobs for in-line finishing. The highly intuitive interface offers advanced functionality, including imposition options and creep correction.



## ADVANCED RESPONSIBILITY

Solutions that propel your business while reducing our environmental footprint—and yours.



Canon Product Life Cycle

### Reduction of CO<sub>2</sub>

Through its Life Cycle Assessment (LCA) System, Canon has lowered CO<sub>2</sub> emissions by more than 30% over previous models by focusing on each stage of the product life cycle, including manufacturing, energy use, and logistics. These products are designed to be more compact with less packaging to make transportation more efficient.

### Eco-friendly design

Canon is making a difference through creative ecological thinking. The imageRUNNER ADVANCE models employ certain components fabricated with 100% recycled plastic from retired products. Canon's innovative green technologies also include bio-based plastic, a plant-derived compound that replaces certain petroleum-based plastic parts.

### A greener way to work

A visionary company, Canon knows that the world and the workplace need a greener workflow. The imageRUNNER ADVANCE Series delivers just that. Now you can seamlessly share and distribute digital documents across the globe. And because you can preview files prior to printing, changes can be made before committing toner to paper to avoid print errors.

### Greater energy efficiency

From the inside out, the imageRUNNER ADVANCE 8105/8095/8085 systems are designed for high energy efficiency and stellar performance. To keep energy consumption low, these models employ 120V power. The combination of Canon's fusing technologies and new pO toner helps save energy by minimizing heat and power requirements. The Series' new duplex image reader captures superb-quality images at impressive speeds while using less electricity than ever. Canon's Induction Heating Fusing System reduces power use in digital multifunction systems by up to an astonishing 30% over the previous model.\* And when systems are in Sleep Mode, power consumption is 1W or less. With advanced technologies present in each model, the Series meets ENERGY STAR® standards.

### Reducing pollution

All suppliers are required to meet Canon's stringent Green Procurement policy and environmental terms. This helps Canon exceed the toughest global standards set by the EU RoHS Directive, which requires the restriction of six specified hazardous substances. Canon currently restricts the use of 23 such substances.

# Product Specifications

## Main Unit

<b>Operation Panel</b>	
10.4" SVGA Full-Color TFT Upright Screen	
<b>Memory</b>	
Standard:	1.5GB RAM
Maximum:	2GB RAM
<b>Hard Disk Drive</b>	
Standard:	80GB
Maximum:	250GB
<b>Network Interface Connection</b>	
Standard:	10/100/1000Base-TX
Optional:	Wireless LAN (IEEE 802.1x)
<b>Other Interface</b>	
Standard:	USB 2.0 (Host)x2 USB 2.0 (Device)
Optional:	Device Port [USB 2.0 (Host)x2, Serial Interface, Copy Control Interface]
<b>Copy/Print Speed (Letter)</b>	
<b>8105:</b>	Up to 105 ppm
<b>8095:</b>	Up to 95 ppm
<b>8085:</b>	Up to 85 ppm
<b>First-Copy-Out Time (Letter)</b>	
2.7 Seconds or Less	
<b>Paper Sources (20 lb. Bond)</b>	
Standard:	Dual 1,500-sheet Drawers Dual 550-sheet Cassettes 100-sheet Stack Bypass
Maximum:	7,700 Sheets (with Optional Paper Deck)
<b>Output Paper Capacity (20 lb. Bond)</b>	
4,250 Sheets (with Staple or Booklet Finisher)	
<b>Output Paper Sizes</b>	
Drawers:	Letter
Cassettes:	13" x 19", 12" x 18", 11" x 17", Legal, Letter, Letter-R, Executive, Statement-R, Custom Size [5-1/2" x 7-1/8" to 13" x 19-1/4" (140mm x 182mm to 330mm x 488mm)]
Bypass:	13" x 19", 12" x 18", 11" x 17", Legal, Letter, Letter-R, Executive, Statement-R, Custom Size [4" x 5-7/8" to 13" x 19-1/4" (100mm x 148mm to 330mm x 488mm)]
<b>Acceptable Paper Weight</b>	
Drawers/ Cassettes:	14 lb. Bond to 80 lb. Cover (52 to 220 g/m <sup>2</sup> )
Bypass:	14 lb. Bond to 140 lb. Index (52 to 256 g/m <sup>2</sup> )
<b>Special Media Support</b>	
Cassettes:	Tab
Bypass:	Transparency, Tracing, Labels
<b>Warm-up Time (From Power On)</b>	
1 Minute or Less	
<b>Power Requirements/Plug</b>	
120-127V AC, 60Hz, 16A/NEMA 5-20P	
<b>Dimensions (H x W x D)</b>	
49-1/4" x 53-3/8" x 30-3/8" * (1252mm x 1481mm x 770mm)*	
<b>Installation Space (W x D)</b>	
93-3/4"*** x 30-3/8" (2382mm x 770mm) (When Booklet Finisher is attached and Stack Bypass and Auxiliary Tray are extended)	
<b>Weight</b>	
Approx. 534 lb. (242kg)***	
<b>Toner (Estimated Toner Yield @ 6% Coverage)</b>	
70,000 Images	

## Image Reader Unit

<b>Scan Resolution</b>	
Up to 600 x 600 dpi	
<b>Acceptable Originals (Glass)</b>	
Sheet, Book, 3-Dimensional Objects (up to 4.4 lb.)	
<b>Maximum Original Size</b>	
Up to 11" x 17"	
<b>Document Feeder</b>	
<b>Scan Method (Standard)</b>	
Single-Pass Duplexing Automatic Document Feeder	
<b>Acceptable Originals</b>	
Paper Size:	11" x 17", Legal, Letter, Letter-R, Statement, Statement-R
<b>Scan Speed (BW/Color; Letter)</b>	
Simplex:	120/85 ipm (300 dpi) 120/51 ipm (600 dpi) <sup>†</sup>
Duplex:	200/100 ipm (300 dpi) 120/51 ipm (600 dpi) <sup>†</sup>
<b>Paper Capacity (20 lb. Bond)</b>	
300 Sheets	

## Print Specifications

<b>Engine Resolution</b>	
1200 x 1200 dpi	
<b>PDL Support</b>	
Standard:	UFR II
Optional:	PCL 5e, PCL 6, Adobe PS 3
<b>Print Driver Supported OS</b>	
UFR II,	Windows® (Windows 2000/ XP/7/Server 2003/Server 2008/Windows Vista®), Citrix MetaFrame, Macintosh® (OS X 10.3.9 or Later Including 10.6.1)
PCL 5e/6:	Windows (Windows 2000/ XP/7/Server 2003/Server 2008/Windows Vista), Citrix MetaFrame
XPS:	Windows Vista, Windows Server 2008
<b>Direct Print Support</b>	
Standard:	TIFF, JPEG, EPS <sup>††</sup>
Optional:	PDF, XPS <sup>††</sup>

## Universal Send Specifications

<b>Sending Method</b>	
E-Mail, I-Fax, SMB, File Server (FTP, SMB, WebDAV), Mail Box	
<b>Communication Protocol</b>	
File:	FTP (TCP/IP), SMB (TCP/IP), WebDAV
E-mail/I-Fax:	SMT, POP3, I-Fax (Simple, Full)
<b>File Format</b>	
Standard:	TIFF, JPEG, PDF, PDF (Compact), PDF (Apply Policy), PDF (Optimize for Web), PDF/A-1b, XPS, XPS (Compact)
Optional:	PDF (Trace & Smooth), PDF/ XPS (OCR), PDF (Encrypted), PDF/XPS (Digital Signature), PDF (Reader Extensions)

## Store Specifications

<b>Mail Box (Number Supported)</b>	
100 User Inboxes, One Memory RX Inbox, 50 Confidential Fax Inboxes	
<b>Advanced Box</b>	
Available Disk	
Space:	Approximately 10GB (Standard HDD), 113GB (250GB HDD)

<b>Communication</b>	
Protocol:	SMB <sup>†</sup> or WebDAV
Supported Client PC:	Windows (Windows 2000/ XP/7/Windows Vista)
<b>Memory Media</b>	
Standard:	USB Memory
Optional:	SD, SDHC, CompactFlash, Memory Stick, Microdrive

## Security Specifications

<b>Standard</b>	
Department ID Management, Single Sign On-H, Access Management System (Device and Function Level Log-in), Secured Print, Trusted Platform Module, User Access Control of Advanced Box, Mail Box Password Protection, IPv6, Restricting Features (Restricting the Send Function, Restricting New Addresses on Address Book), SSL Encrypted Communication, SNMPv1/v3, MAC/IP Address Filtering, SMTP Authentication, POP Authentication before SMTP, HDD Format, Adobe® LiveCycle® Rights Management ES Integration	
<b>Optional</b>	
Removable HDD, HDD Erase, HDD Encryption/ Mirroring, Encrypted Secure Print, Encrypted PDF, Document Scan Lock, IPsec, Secure Watermark	

## Optional Accessories

### Paper Supply Options

<b>Paper Deck Unit-C1</b>	
Paper Capacity:	3,500 Sheets [20 lb. Bond (80 g/m <sup>2</sup> )]
Acceptable Paper Weight:	14 lb. Bond to 80 lb. Cover (52 to 220 g/m <sup>2</sup> )
Acceptable Paper Type:	Thin, Plain, Heavy, Color, Recycled, Pre-Punched
Acceptable Paper Size:	Letter
Dimensions (H x W x D):	22-1/2" x 12-3/4" x 23" (570mm x 323mm x 583mm)
<b>POD Deck Lite-A1</b>	
Paper Capacity:	3,500 Sheets [20 lb. Bond (80 g/m <sup>2</sup> )]
Acceptable Paper Weight:	14 lb. Bond to 140 lb. Index (52 to 256 g/m <sup>2</sup> )
Acceptable Paper Type:	Thin, Plain, Heavy, Color, Recycled, Pre-punched, Transparency, Labels, Bond, Letterhead
Acceptable Paper Size:	13" x 19", 12" x 18", 11" x 17", Legal, Letter, Letter-R
Dimensions (H x W x D):	22-1/2" x 23-5/8" x 24-1/2" (570mm x 601mm x 621mm)

### Output Options

<b>Booklet Finisher-F1 PRO</b>	
Number of Trays:	2
Tray Output Capacity:	5,000 Sheets (Letter, Statement-R, Executive) <b>Tray A:</b> 3,000 Sheets (Letter, Letter-R, Statement-R, Executive) 1,500 Sheets (11" x 17", Legal) <b>Tray B:</b> 2,000 Sheets (Letter, Letter-R, Executive) 1,000 Sheets (13" x 19", 12-5/8" x 17-11/16", 12" x 18", 11" x 17", Legal)
Acceptable Paper Weight:	14 lb. Bond to 140 lb. Index (52g/m <sup>2</sup> to 256g/m <sup>2</sup> )

Acceptable Paper Type:	Thin, Plain, Heavy, Color, Recycled, Pre-Punched, Transparency, Tracing, Labels, Tab, Bond, Letterhead, Coated <sup>†††</sup>
Acceptable Paper Size:	<b>Stapling:</b> Executive, Letter-R, Letter, Legal, 11" x 17" <b>Sheet Stacking:</b> Up to 13" x 19.2" <b>Saddle Finisher:</b> Letter-R, Legal, 11" x 17", 12" x 18", 12-5/8" x 17-11/16", 13" x 19", Custom Size [8-1/4" x 11" to 13" x 19-1/4" (210mm x 279.3mm to 330.2mm x 487.7mm)]
Staple Positions:	Corner/Double Stapling (All Sizes)
Maximum Stapling Capacity:	100 Sheets [20 lb. Bond (80g/m <sup>2</sup> )] (Letter, Executive) 50 Sheets [20 lb. Bond (80g/ m <sup>2</sup> )] (11" x 17", Legal, Letter-R)
Maximum Saddle-Stitch Capacity:	25 Sheets [20 lb. Bond (80g/m <sup>2</sup> )]
Paper Capacity:	<b>Tray A:</b> 1,000 Sheets/100 Sets of Staple Mode: (11" x 17", Legal, Letter, Letter-R, Executive) <b>Tray B:</b> 2,000 Sheets/100 Sets (Letter, Letter-R, Executive)
Type of Staple:	Staple-N1 (5,000 x 3) Corner/ Doubling Staple Staple-P1 (5,000 x 2) Saddle- Stitch Staple
Dimensions (H x W x D):	46-1/2" x 31-1/2" x 31-1/4" <sup>Δ</sup> (1180mm x 800mm x 792mm) <sup>Δ</sup>
<b>Puncher Unit-BB1<sup>ΔΔ</sup></b>	
Acceptable Paper Weight:	14 lb. Bond to 73 lb. Cover (52g/m <sup>2</sup> to 200g/m <sup>2</sup> )
Paper Sizes:	<b>2-Hole:</b> Legal, Letter-R <b>3-Hole:</b> 11" x 17", Letter, Executive
Punch Speed:	Up to 105 ppm (Depends on speed of Marking Engine)
<b>Booklet Trimmer-D1<sup>ΔΔ</sup></b>	
Margin Trimming:	Fore-Edge Trim
Trim Amount:	0.08" to 0.78" (2mm to 20mm)
Trim Thickness:	100 Sheets
Waste Tray Capacity:	1,500 Sheets (With 0.78" Trim, 20 lb. Bond)
Acceptable Paper Weight:	14 lb. Bond to 140 lb. Index (52g/m <sup>2</sup> to 256g/m <sup>2</sup> )
Output Tray Capacity:	30 Booklets
Dimensions (H x W x D):	41" x 62" x 30-3/8" (1040mm x 1575mm x 770mm)
<b>Staple Finisher-D1/Booklet Finisher-D1</b>	
Number of Trays:	3
Total Output Capacity:	4,250 Sheets (Letter, Statement-R, Executive) <b>Tray A:</b> 1,500 Sheets (Letter, Statement-R, Executive), 750 Sheets (13" x 19", 12" x 18", 11" x 17", Legal, Letter-R) <b>Tray B:</b> 250 Sheets (Letter, Statement-R, Executive), 125 Sheets (13" x 19", 12" x 18", 11" x 17", Legal, Letter-R) <b>Tray C:</b> 2,500 Sheets (Letter), 1,250 Sheets (Statement-R, Executive) 750 Sheets (13" x 19", 12" x 18", 11" x 17", Legal, Letter-R)
Acceptable Paper Weight:	14 lb. Bond to 140 lb. Index (52 to 256 g/m <sup>2</sup> )

(Specifications are continued on back page.)

## Product Specifications

### Optional Accessories

(continued)

Acceptable Paper Type:	Thin, Plain, Heavy, Color, Recycled, Pre-Punched, Transparency, Tracing, Labels, Tab, Bond, Letterhead, Coated <sup>†††</sup>
Acceptable Paper Size:	13" x 19", 12" x 18", 11" x 17", Legal, Letter, Letter-R, Executive, Statement-R, Custom Size [4" x 5-7/8" to 13" x 19-1/4" (100mm x 148mm to 330mm x 488mm)]
Staple Positions:	<b>Corner/Double Stapling:</b> 11" x 17", Legal, Letter, Letter-R, Executive <b>Saddle-Stitch:</b> <sup>††</sup> 13" x 19", 12" x 18", 11" x 17", Legal, Letter-R, Custom Size [8-1/4" x 11" to 13" x 19-1/4" (210mm x 279.3mm to 330mm x 488mm)]
Max. Stapling Capacity:	100 Sheets [20 lb. Bond (80 g/m <sup>2</sup> )] (Letter, Executive) 50 Sheets [20 lb. Bond (80 g/m <sup>2</sup> )] (11" x 17", Legal, Letter-R)
Max. Saddle-Stitch Capacity:	20 Sheets [20 lb. Bond (80 g/m <sup>2</sup> )] including one cover page up to 140 lb. Index (256 g/m <sup>2</sup> )
Dimensions (H x W x D):	<b>Booklet Finisher:</b> 41" x 30-1/4" (35-1/4"*) x 30-1/8" [1040mm x 767mm (896mm*) x 765mm] <b>Staple Finisher:</b> 41" x 25-3/4" (30-3/4"*) x 30-1/8" [1040mm x 654mm (782mm*) x 765mm]
<b>Puncher Unit-BF1<sup>▲▲</sup></b>	
Acceptable Punch Paper Weight:	14 lb. Bond to 140 lb. Index (52 to 256 g/m <sup>2</sup> )
Acceptable Punch Paper Type:	Thin, Plain, Heavy, Color, Recycled, Tab, Bond, Letterhead, Coated <sup>†††</sup>
Acceptable Punch Paper Size:	11" x 17", Legal, Letter, Letter-R
Punch Type:	2-hole (Legal, Letter-R) 3-hole (11" x 17", Letter)
<b>Inner Booklet Trimmer-A1<sup>▲▲▲</sup></b>	
Trimming Method:	Face Trim
Trim Thickness:	40 Sheets (2mm to 20mm Trimming Width)
Waste Tray Capacity:	1,500 Sheets of Trimmed Strip [Width 0.78" (20mm), Letter, 20 lb. Bond (80 g/m <sup>2</sup> )]
Acceptable Paper Weight:	16 lb. Bond to 140 lb. Index (60 to 256 g/m <sup>2</sup> )
Acceptable Paper Type:	Thin, Plain, Heavy, Recycled, Color, Coated <sup>†††</sup>
Output Tray Capacity:	30 Booklets

<b>Professional Puncher-C1 (with Integration Unit)</b>	
Acceptable Punch Paper Weight:	Letter (3-hole, 5-hole, Velo Bind 11-hole, Plastic Comb 19-hole, Twin Loop 21-hole/32-hole, Color Coil 44-hole): 20 lb. Bond to 80 lb. Cover (75 to 216 g/m <sup>2</sup> ) <b>Letter (ProClick 32-hole):</b> 20 lb. Bond to 80 lb. Cover (75 to 176 g/m <sup>2</sup> )
Acceptable Punch Paper Type:	Plain, Heavy, Color, Recycled, Tab, Coated <sup>†††</sup>
Acceptable Punch Paper Size:	Letter
Punch Pattern Die Sets (optional):	Plastic Comb (19-hole) Twin Loop (21/32-hole) Color Coil (44-hole) Velo Bind (11-hole) Loose Leaf (3/5-hole) ProClick (32-hole)
Dimensions (H x W x D):	<b>Professional Puncher-C1:</b> 41" x 12" x 31-1/4" (1040mm x 305mm x 792mm) <b>Integration Unit:</b> 41" x 9-7/8" x 31-1/4" (1040mm x 250mm x 792mm)
<b>Document Insertion Unit-K1<sup>■</sup></b>	
Number of Trays:	2
Acceptable Paper Weight:	14 lb. Bond to 140 lb. Index (52 to 256 g/m <sup>2</sup> )
Acceptable Paper Type:	Thin, Plain, Heavy, Color, Recycled, Pre-punched, Tab, Bond, Letterhead, Coated <sup>†††</sup>
Acceptable Paper Size:	13" x 19", 12" x 18", 11" x 17", Legal, Letter, Letter-R, Executive, Custom Size [7-1/8" x 7-1/8" to 13" x 19-1/4" (182mm x 182mm to 330mm x 488mm)]
Dimensions (H x W x D):	55-3/8" x 29-3/8" x 31-1/4" (1407mm x 746mm x 793mm)
<b>Paper Folding Unit-H1<sup>■</sup></b>	
Folding Type:	Z-Fold, Accordion Z-Fold, C-Fold, Half-Fold, Double Parallel Fold
Acceptable Paper Weight:	14 lb. Bond to 28 lb. Bond (52 to 105 g/m <sup>2</sup> )
Acceptable Paper Type:	Thin, Plain, Color, Recycled, Bond, Coated <sup>†††</sup>
Acceptable Paper Size:	<b>Accordion Z-Fold, C-Fold, Half-Fold:</b> Letter-R, 11" x 17", Legal, Letter-R <b>Z-fold:</b> 11" x 17", Legal, Letter, Letter-R <b>Double Parallel Fold:</b> Legal, Letter-R
Dimensions (H x W x D):	46-7/8" x 13-1/4" x 31-1/4" (1190mm x 336mm x 793mm)

### Additional Print Controller Options

<b>imagePASS-U1</b>	
Type:	External
Processor:	Intel® Core™ Duo T2500 2.0GHz
System:	System 8 Release 2
Memory:	2GB (Standard/Maximum)
Hard Disk:	80GB
Interface Connections:	10/100/1000Base-T (RJ-45)
PDL Support:	Adobe PS 3/PCL 5e/PCL 6
Print Driver Supported OS:	<b>Adobe PS 3:</b> Windows (Windows 2000/XP/7/Server 2003/Server 2008/Windows Vista), Macintosh (OS X 10.3.9 or later) <b>PCL 5e/6:</b> Windows (2000/XP/7/Server 2003/Windows Vista)

### Other Optional Accessories

- Utility Tray-A1
- USB Keyboard
- Card Reader-C1<sup>■</sup>
- Copy Card Reader Attachment Kit-A1
- Braille Label Kit-F1
- ADF Access Handle-A1
- Copy Control Interface Kit-A1
- Convenience Stapler-B1
- PCL Printer Kit-AH1
- PS Printer Kit-AH1
- Direct Print Kit (for PDF/XPS)-H1
- Encrypted Secure Print-D1
- Barcode Printing Kit-D1<sup>◇</sup>
- Web Access Software-H1<sup>◇◇</sup>
- imageRUNNER ADVANCE Essentials
- Universal Send Advanced Feature Set-E1
- Universal Send Security Feature Set-D1
- Universal Send Digital User Signature Kit-C1
- Authorized Send<sup>◇◇◇</sup>
- Secure Watermark-B1
- Wireless LAN Board-B1<sup>◆</sup>
- USB Device Port-A1
- Multimedia Reader/Writer-A1<sup>◆◆</sup>
- Additional Memory Type B (512MB)<sup>◆◆◆</sup>
- Document Scan Lock Kit-A2
- Data Erase Kit-C1

- HDD Data Encryption and Mirroring Kit-C2
- Removable HDD Kit-AD1
- 2.5-inch/80GB HDD-C1
- 2.5-inch/250GB HDD-D1
- IP Sec Board-B2<sup>◆</sup>
- Expansion Bus-F1
- Voice Guidance Kit-F1
- Remote Operator's Software Kit-B1
- eCopy Suite
- imageWARE Suite

\* Height: To the top of the Upright Control Panel in the standard position.  
Width: To the right edge of the Upright Control Panel in the extended position.

\*\*\* Includes ADF and consumables.

† Standard color scan support is up to 300 dpi. Up to 600-dpi scanning requires Additional Memory Type B (512MB).

†† EPS and XPS cannot be printed directly from the Memory Media or Advanced Box.

††† Coated paper can only be loaded through the Document Insertion Unit-K1.

□ Browning Advanced Box using SMB is not supported when imagePASS-U1 is attached.

□□ Saddle-Stitching supported with Booklet Finisher-D1 only.

△ Width is 1090mm when the extension tray is pulled out.

△△ Option for Booklet Finisher-F1 PRO.

▲ When the Auxiliary Tray is extended.

▲▲ Puncher Unit-BF1 installs internally with either the Staple Finisher-D1 or Booklet Finisher-D1.

▲▲▲ Option for Booklet Finisher-D1.

■ Requires Staple Finisher-D1 or Booklet Finisher-D1.

■ Requires the Copy Card Reader Attachment Kit-A1.

◇ Requires PCL Printer Kit-AH1.

◇◇ Requires PS Printer Kit-AH1 or Direct Print Kit (for PDF/XPS)-H1 when printing PDF files.

◇◇◇ Check with your Authorized Canon Dealer for availability.

◆ Requires Expansion Bus-F1.

◆◆ Requires USB Device Port-A1.

◆◆◆ Required for 600-dpi color scanning.

NOTE: Some accessories require additional equipment or may be prerequisites for other options. Some accessories cannot be installed simultaneously. Check with your Authorized Canon Dealer for details.

**Canon**  
image*ANYWARE*

1-800-OK-CANON  
www.usa.canon.com

Canon U.S.A., Inc.  
One Canon Plaza  
Lake Success, NY 11042

As an ENERGY STAR® Partner, Canon U.S.A., Inc. has determined that these products meet the ENERGY STAR guidelines for energy efficiency. ENERGY STAR and the ENERGY STAR mark are registered U.S. marks. CANON, IMAGERUNNER, IMAGEPASS, MEAP, and the GENUINE logo are registered trademarks of Canon Inc. in the United States and may also be registered trademarks or trademarks in other countries. IMAGEWARE is a registered trademark of Canon U.S.A., Inc. in the United States and is a trademark of Canon Inc. in certain other countries. IMAGEANYWARE is a trademark of Canon. All other referenced product names and marks are trademarks of their respective owners and are hereby acknowledged. Some items may not be available at this time; please check for availability. All printer output images are simulated. Products are shown with optional accessories. Specifications and availability subject to change without notice.

©2010 Canon U.S.A., Inc. All rights reserved.

0150W410

1210R-8105/8095/8085-40M-LSP

